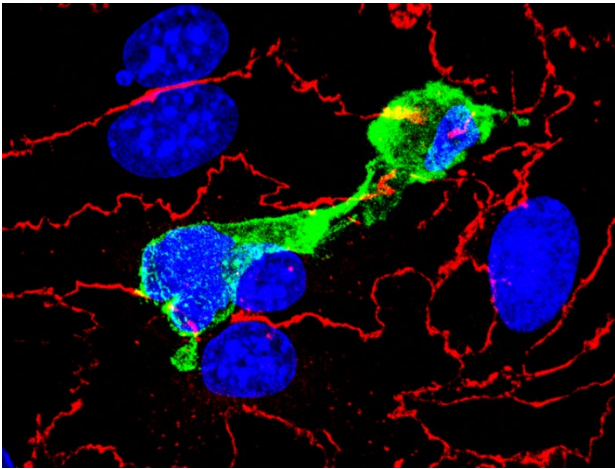
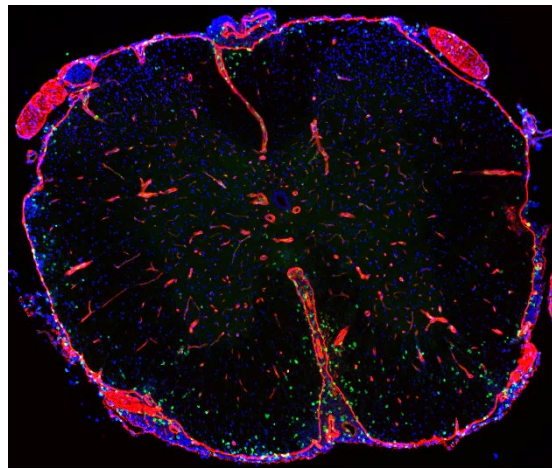


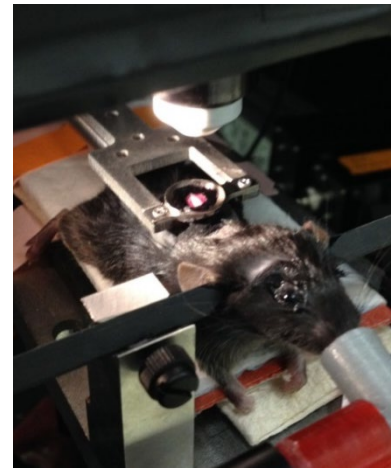
# Neurovascular inflammation in mouse models of human disease @LutzLab



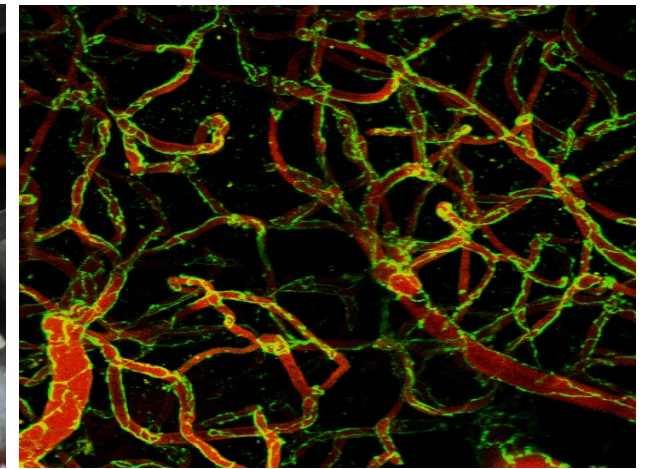
In vitro leukocyte crossing vascular wall



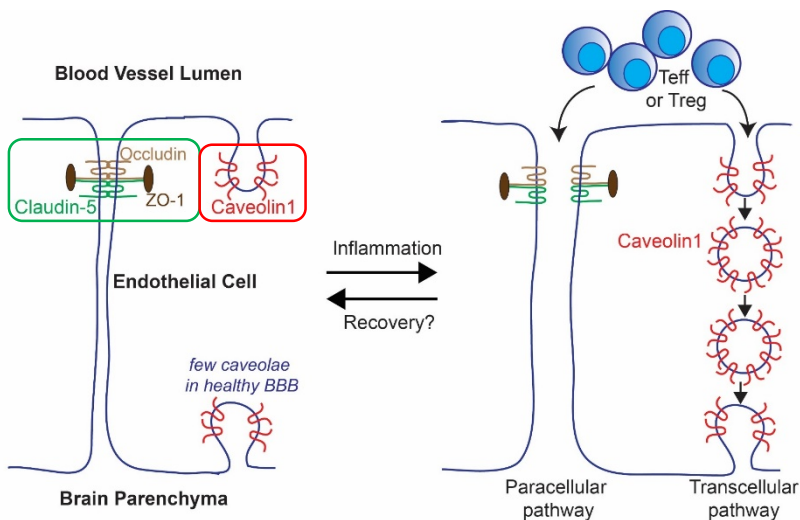
Spinal cord inflammation



In vivo imaging



Blood brain barrier leakage



- Prevent multiple sclerosis by blocking T cells from crossing the Blood Brain Barrier (BBB)
- Promote recovery with new methods to deliver therapeutic cells across the BBB
- Endothelial cell tight junction remodeling in transgenic mice
- Novel regulators of endothelial cell caveolae/vesicular trafficking
- Disrupting leukocyte/endothelial integrin binding and chemotaxis

Email Sarah Lutz [SELUTZ@uic.edu](mailto:SELUTZ@uic.edu) or stop by COMRB 7080