

How do I connect to UIC-WiFi using Mac OS X 10.7?

Setting up UIC-WiFi on Mac OS X 10.7 Lion is completely different from [Leopard and Snow Leopard](#). It works in the same way as it does on iPhones and iPads. If you already have UIC-WiFi set up on your Mac when you upgrade your operating system to Mac OS X 10.7 Lion, Lion will import the UIC-WiFi settings for you; you won't have to reconfigure it in that case.

When connected, you will see the status of your connection in the Wi-Fi icon in the main menu at the top of your monitor, on the right. The number of arcs indicate the strength of the signal, and you can click on the icon to see the other available networks. Option-Click on the icon to see details of your current connection.

Download but do not install the new config file

While you have an Internet connection, on your laptop, iPhone, iPad, or iPod touch, open **the following page** (http://www.uic.edu/depts/accc/network/wireless/uicwifi/UIC_Wireless_Setup.mobileconfig). **You might be prompted to install the configuration profile, but don't install it yet, just download it.**

Delete your current profiles

Step 0: If you already have a connection profile on your device for UIC-Wireless **or for UIC-WiFi**, please delete them before you install this new profile:

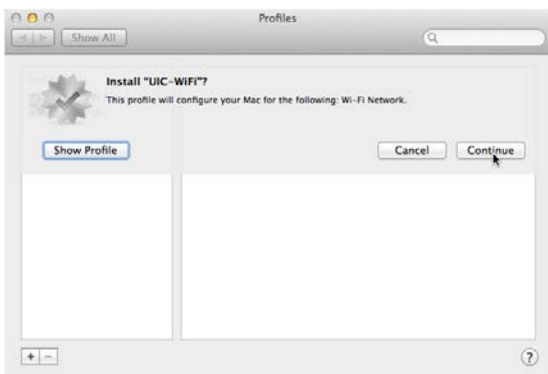
1. **Apple > System Preferences >** In the System section: **Profiles**
2. Click on the name of your UIC profile(s) on the left, one at a time, and click the - button at the bottom left.
3. It will ask you if you are sure, click **Remove**.
4. It will ask for your password to allow the change. Type it and click **OK**.

Do the above for both your UIC-Wireless profile and for your UIC-WiFi profile, if you have them.

Install the new UIC Wireless profile

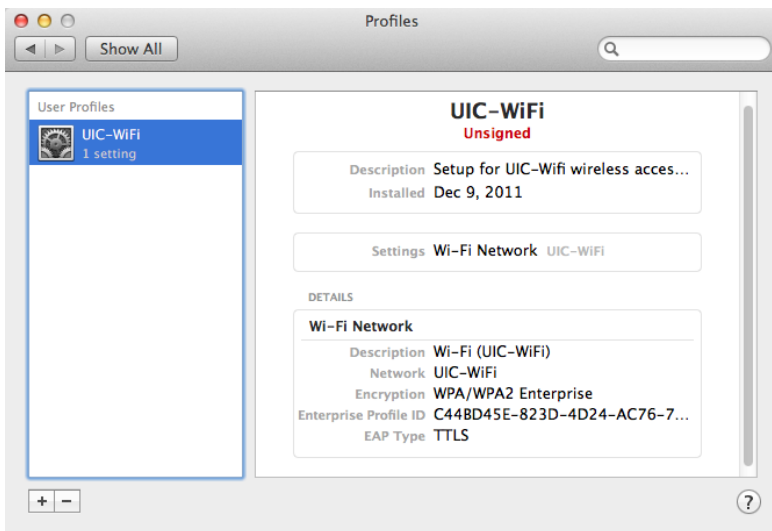
1. **If you are on campus, turn Wi-Fi off:**
 1. Click on the Wi-Fi icon in the system menu at the top right of your monitor.
Select **Turn Wi-Fi Off**.
2. Go to your Downloads folder and click on the **UIC_Wireless_Setup.mobileconfig** file that you downloaded before.
3. The Profiles System Preference will open automatically, and a dialog box will ask whether you want to install "UIC Wireless Setup". Click **Continue**.

A dialog boxes will open asking whether you are sure because the configuration is unsigned. It is from the ACCC. Click **Continue**.



4. A series of three dialog boxes will open asking you to enter a Username: and Password: for UIC-Wireless, UIC-WiFi, and Eduroam. **Do not fill this in unless you are the only person who uses this account on this Mac.**
 - If you are the only person, then, in the Username: box, type your UIC netid (example: **adabyron**; for eduroam, use your UIC netid@uic.edu; example: **adabyron@uic.edu**), and in the Password: box, type your **Common password** and click **Install**.
 - If you are not the only person, do not fill in the Username: and Password: boxes; just click **Install**.
5. A dialog box will open asking your permission to make the changes; type your Mac account's password in the Password: box and click **OK**.

After the profile is installed, it will be listed in **Profile** in System Preferences.

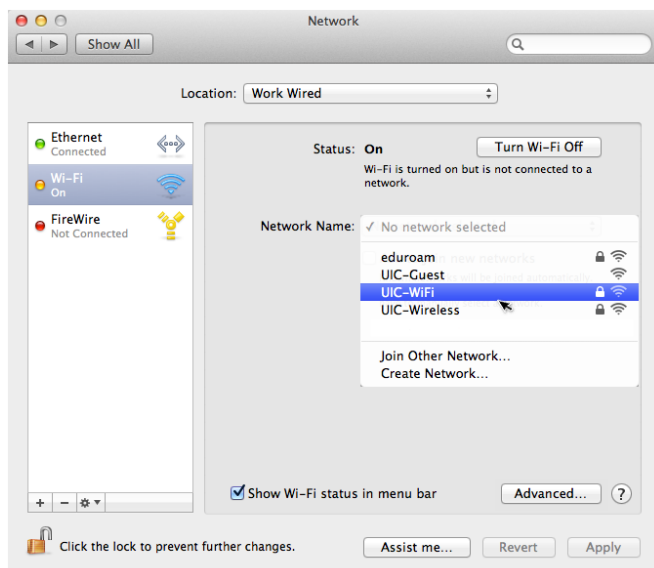


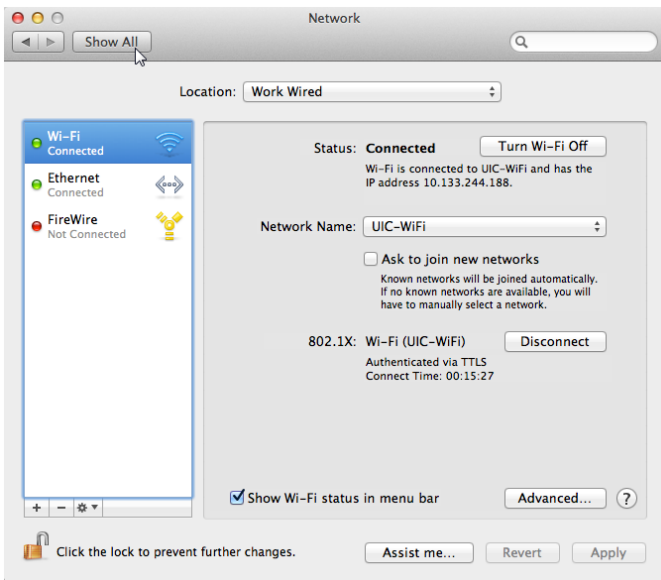
6. Close **System Preferences**. (You don't have to do this, but it might help with getting the UIC-WiFi network to find the UIC-WiFi profile that you just installed.)

Connect to UIC-WiFi:

1. **While you are on campus: Apple > System Preferences > Network**, and click **Turn Wi-Fi On**.

From the Network Name: dropdown list, select **UIC-WiFi** (the network).





2. Lion should automatically select the **UIC-WiFi** profile you just installed. **If you entered your netid and password in step 5 above, you should *not* be prompted to them enter them again at this point.**
 - If you did enter them with the profile and you are prompted for them now, it means that Lion is not using the correct profile.
 - If this happens to you, go to **ACCeSS Helpdesk** (<http://beta.acc.uic.edu/services/access>) and they will help you.
3. The first time you connect to UIC-WiFi, you will be asked to accept a Certificate.

When you close Network Preferences, a dialog box will open asking if you want to Apply your changes before you leave; click **Apply**.

