

GE 3T Rectal cancer MRI Use

32 Channel Cardiac Coil

T2s high-resolution matrix, thin-section (3 mm) imaging, and a small (240–250-mm) field of view, resulting in an inplane resolution of 0.8–1.0 mm.

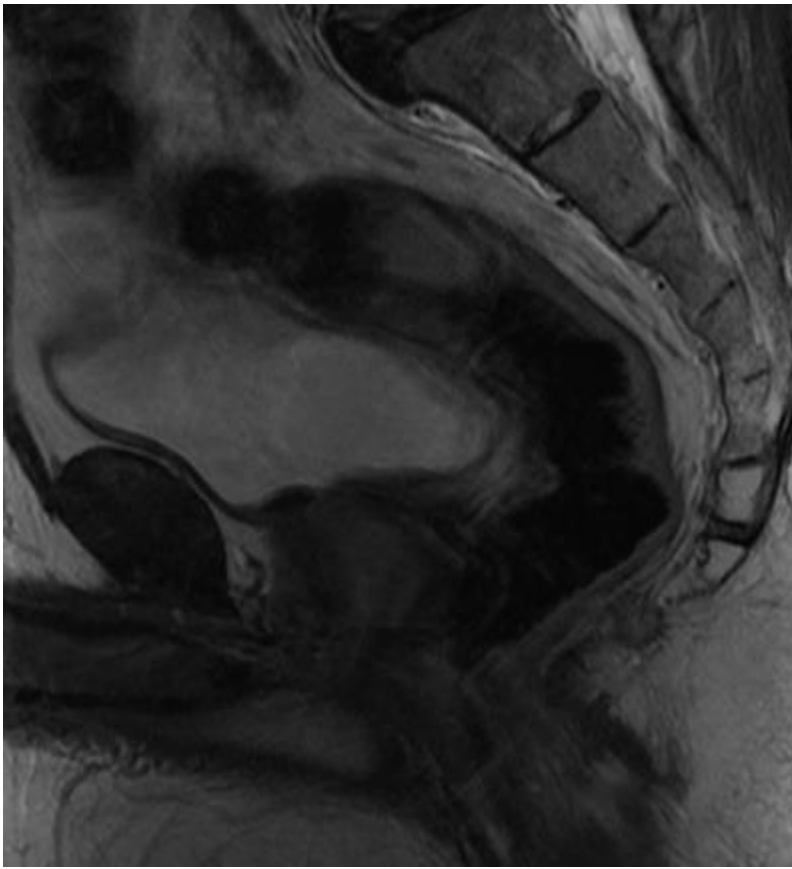
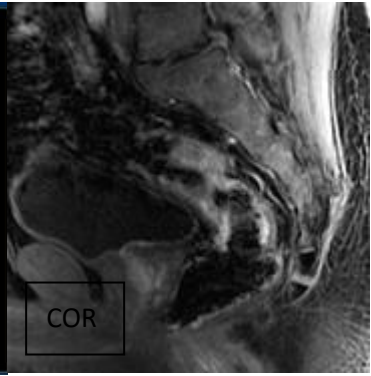
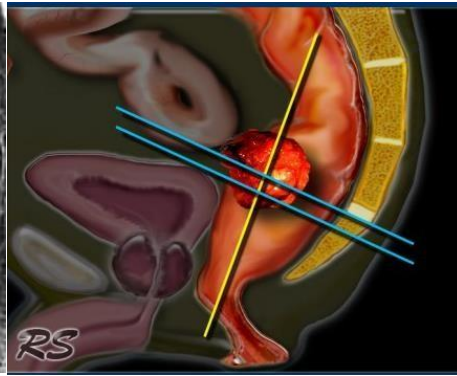
*updated 4/2019

- 1. Survey**
- 2. Small FOV T2 Sag - Anus-L5**
- 3. Large FOV Ax T1**
- 4. Small FOV T2 Ax OBLIQUE to tumor**
- 5. Small FOV Ax DWI OBLIQUE 8 B Values**
- 6. Small FOV T2 Coronal OBLIQUE (perpendicular to axial)**
- 7. Anal canal Coronal OBLIQUE**
- 8. Anal canal Axial OBLIQUE**

Inject

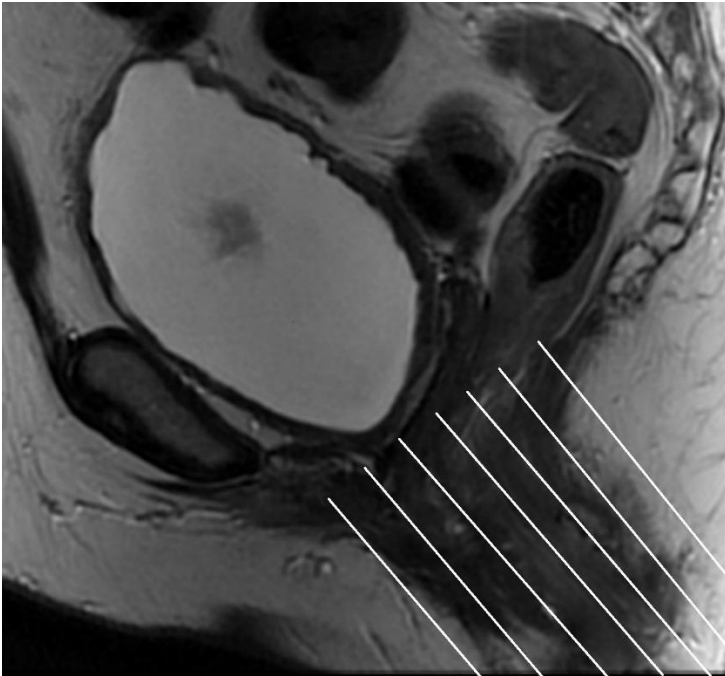
- 9. Small FOV Ax LAVA dynamic**
- 10. Large FOV Ax LAVA high res**
- 11. Large FOV delayed Cor LAVA high res**

<http://www.radiologyassistant.nl/en/p4b8ea8973928a/rectal-cancer-mr-imaging.html>

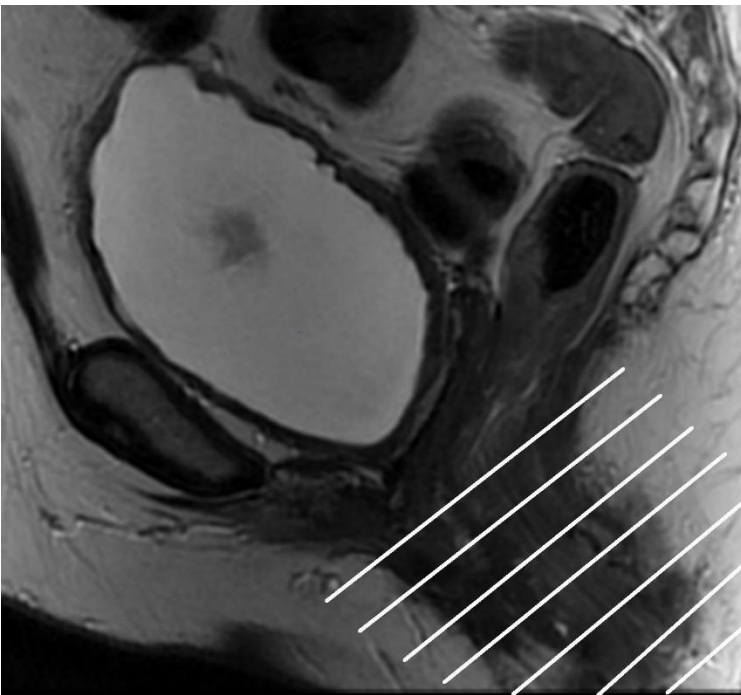


AXIAL OBLIQUE

Image



ANAL CANAL CORONAL OBLIQUE



ANAL CANAL AXIAL OBLIQUE