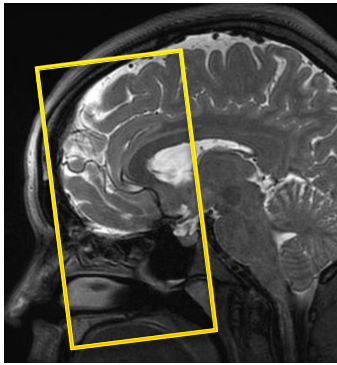


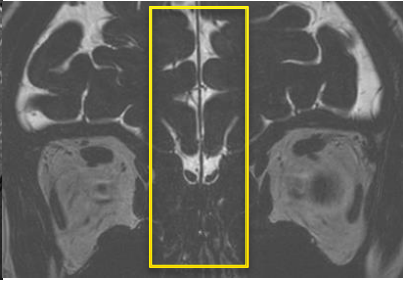
Anosmia Protocol (wo)

- Anosm
- Loss of smell
- Post COVID

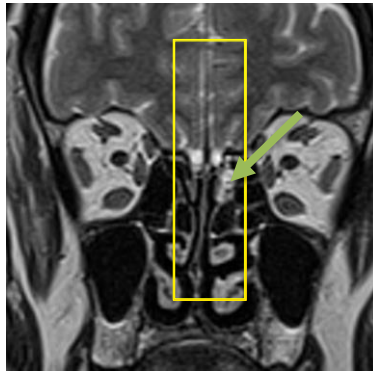
SAG T2 TSE	2mm		22cm	Midline only
COR T2	2mm		Small FOV	Along olfactory nerves (frontal sinus to post sella)
Cor FIESTA /CISS/ T2	0.6	18	Centered	at the olfactory nerves SPACE
AX T2 (no fat sat)	3mm	10%	18-21	Mouth opening to top of frontal sinuses
AX T1	3mm	10%	18-21	Mouth opening to top of frontal sinuses
AX DW	3mm	10%	18-21	Same as axials (resolve DW if available)
Contrast Injection				
AX T1 FS or VIBE or 3mm		10%	18-21	VIBE/ FLEX if available FLEX
COR T1 SE FAT SAT	3mm	10%	18-21	Same as pregad cor
3D FLAIR FS				BRAIN, post only



Cor T2 plan



Sag T2 plan



Cor FIESTA plan