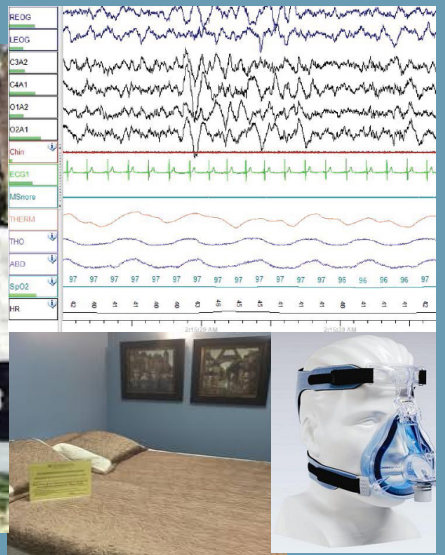


THE  
UNIVERSITY OF  
ILLINOIS  
AT  
CHICAGO

UIC



## Sleep Medicine Faculty



**Bharati Prasad, MD MS**  
Program Director  
Sleep Medicine  
Pulmonary and Critical Care  
Medicine



**Pranshu Adavardkar, MD**  
Pediatric Sleep Medicine



**Ikuyo Imayama, MD MSc**  
Sleep Medicine  
Pulmonary and Critical Care  
Medicine



**Muhammad Najjar, MD**  
Director of Sleep Medicine  
at Jesse Brown VA  
Neurology Sleep Medicine



**Ashima S. Sahni, MD**  
Sleep Medicine  
Pulmonary and Critical Care  
Medicine



**Sai Sunkara, MD**  
Sleep Medicine  
Pulmonary and Critical Care  
Medicine



**Melissa Carlucci, DNP  
APRN**



**Maureen Smith, DNP  
APRN**

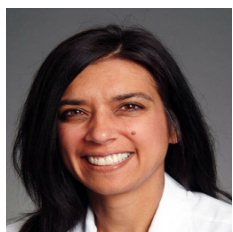
## Multidisciplinary Sleep Rotations



**Maria Therese  
Galang-Boquiren DMD, MS**  
An orthodontist in the UIC  
College of Dentistry. Her re-  
search interest is in evaluating  
the effectiveness of oral appli-  
ance treatment of obstructive  
sleep apnea.



**Michael Spector, DMD, MS**  
A dentist in Restorative Den-  
tistry in the UIC College of  
Dentistry who does dental  
treatment of sleep apnea.

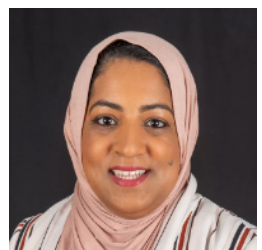


**Rakhi Thambi, MD**  
An ENT in the Otolaryn-  
gology at UIC. She leads the  
INSPIRE surgical evaluation  
and implantation program.

### Jessie Brown V.A.



**Roneil G. Malkani, MD**  
Neurologist  
Sleep Specialist



**Samina Ahmed Jauregui, PsyD**  
Sleep Psychology  
Behavioral Sleep Medicine

### Advocate Children's Medical Group

The following focus on the treatment of infant sleep disorders.



**Darius Loghmanee, MD**  
Pediatric Sleep Medicine



**Innessa Michelle Donskoy, MD**  
Pediatric Sleep Medicine

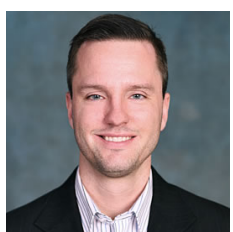
## Center for Sleep and Health Research



**Bilgay I. Balserak, PhD**  
Clinical research focuses on  
women's health with an  
emphasis on sleep  
disturbances & it's relevance to  
adverse health outcomes.



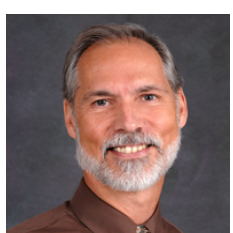
**Anne M. Fink, PhD**  
Bench research on under-  
standing how sleep disor-  
ders impact the cardiovas-  
cular system.



**Michael W. Calik, PhD**  
Bench research on investigating  
pharmacological treatments of  
sleep related breathing  
disorders & studying  
respiratory modulation during  
sleep.



**Mary Kapella, PhD RN**  
Research in developing  
effective interventions to  
address sleep disturbances  
experienced by people with  
chronic illnesses eg. COPD



**David W. Carley, PhD**  
Bench & translational research  
with a focus on the  
neurobiology of sleep to  
understand the causes &  
consequences of sleep disorders  
& to develop improved  
diagnostic & therapeutic  
options.