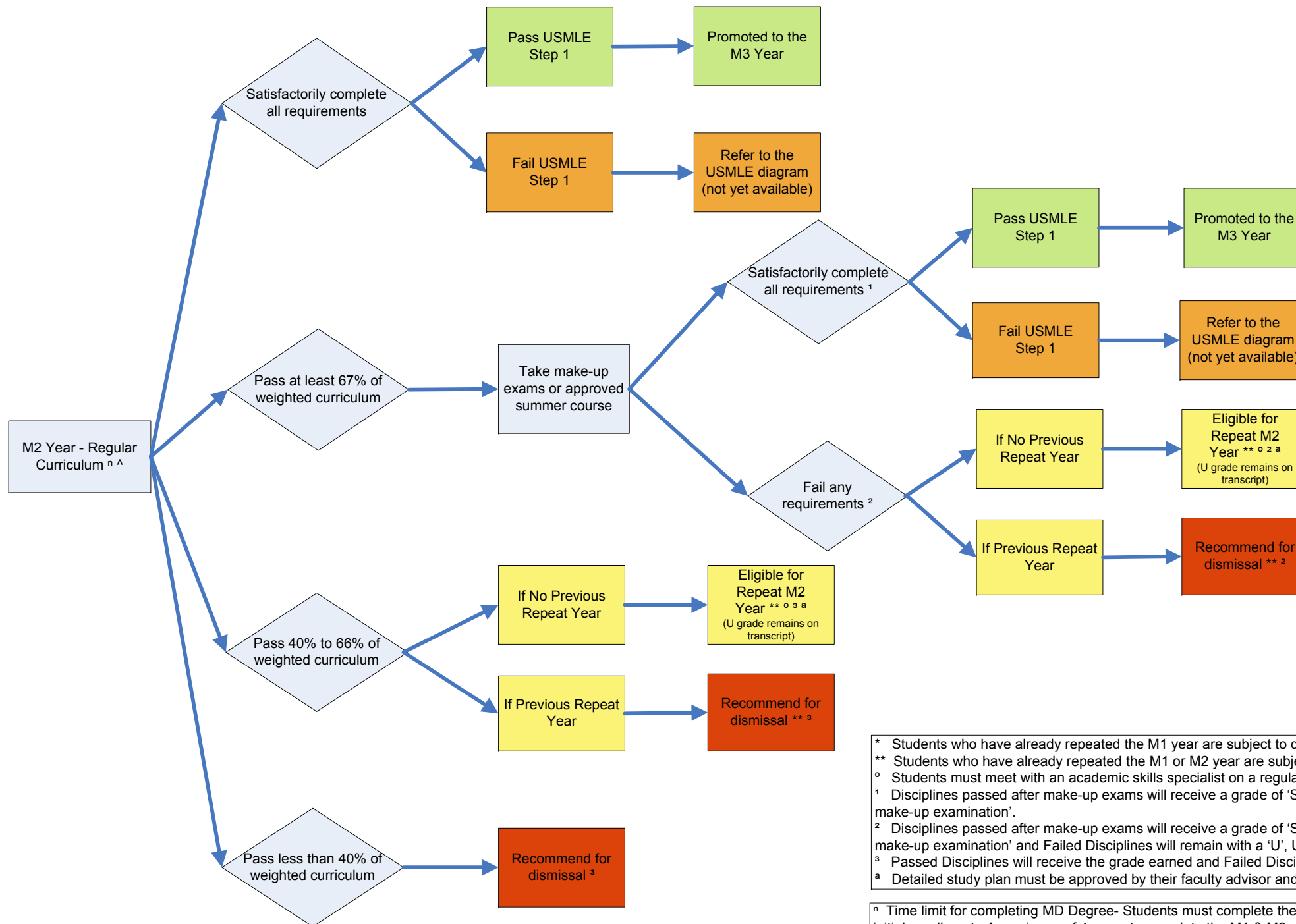


M2 Year Promotion Policy



* Students who have already repeated the M1 year are subject to dismissal.
 ** Students who have already repeated the M1 or M2 year are subject to dismissal.
 0 Students must meet with an academic skills specialist on a regular basis.
 1 Disciplines passed after make-up exams will receive a grade of 'S', Satisfactory with a comment notating 'Passed after make-up examination'.
 2 Disciplines passed after make-up exams will receive a grade of 'S', Satisfactory, with a comment notation "Passed after make-up examination" and Failed Disciplines will remain with a 'U', Unsatisfactory, grade.
 3 Passed Disciplines will receive the grade earned and Failed Disciplines will remain with a 'U', Unsatisfactory, grade.
 a Detailed study plan must be approved by their faculty advisor and the student affairs dean.

ⁿ Time limit for completing MD Degree- Students must complete the medical curriculum within 7 years from the date of initial enrollment. A maximum of 4 years to complete the M1 & M2 years, including passing USMLE Step 1.
[^] Students returning from LOA, in a Restart Year or Continuing will have their Academic Record reviewed by the Assoc. Dean for Curriculum, Assoc. Dean for Students and the COM Registrar's Office to determine curriculum requirements.