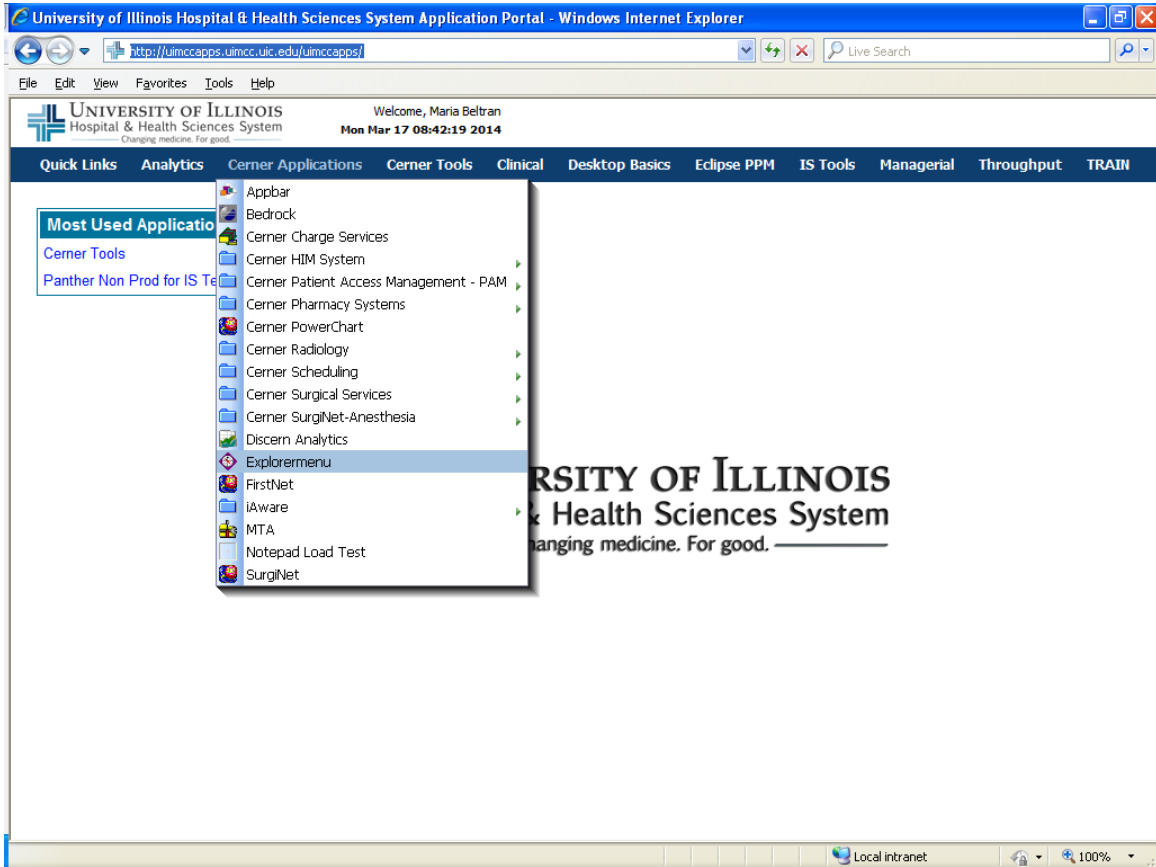
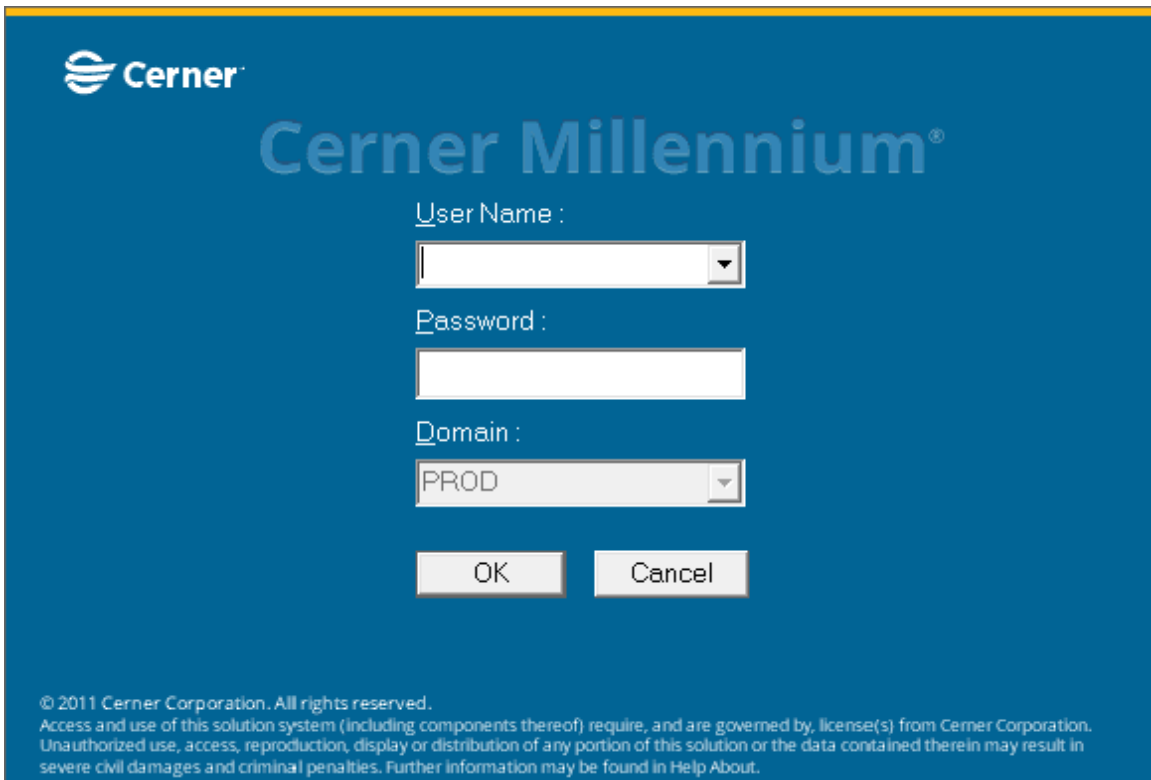


Go to the [UIHHSS portal](#), under Cerner Applications
→ select Explorer menu



Log into Explorer menu application



In Explorer Menu, double-click Main Menu folder and click on the plus sign (+) next to the “Resident Staff” folder.

Click on: **Anesthesia-ACGME Cases Report**. The panel on the right will display the following prompts for you to populate:

- **Output to File/Printer/Mine:** do not change and the report will print to the screen. Then you will be able to print it or export it.
- **Beginning of reporting period:** lower limit for the reporting period, included in the report.
- **End of reporting period:** max limit for the reporting period, included in the report.
- **MRN:** Optional. Enter MRN only if you are interested on one particular patient. Note that the case still needs to have happened inside the selected reporting period.

Click Execute button to run the report.

The longer the reporting period, the longer the report will take to run. The longest reporting period you can run the report for is 31 days. Selecting a longer period will generate an error message.

