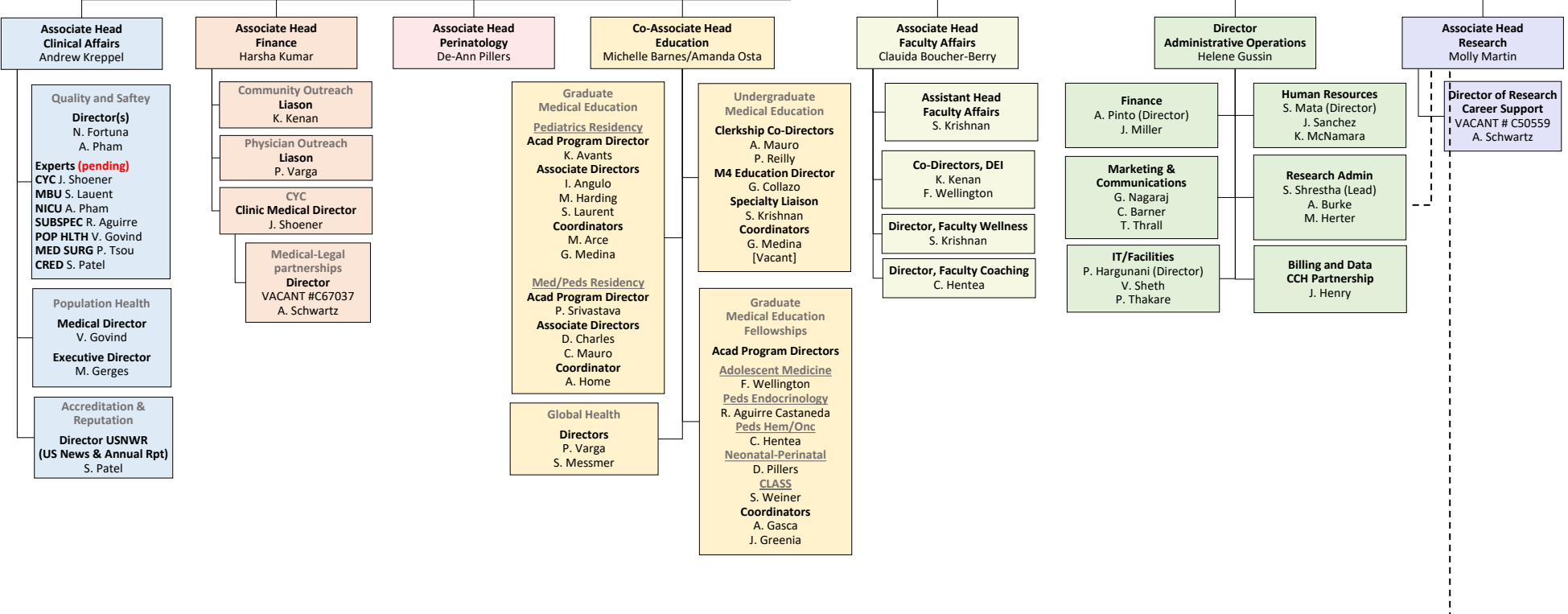
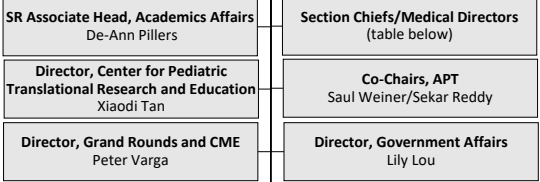


Benjamin W. Van Voorhees, MD, MPH
George R. Honig, MD, PhD Endowed Professor in Pediatrics and Head, Department of Pediatrics; Chief of Service, Childrens Hospital University of Illinois



PEDIATRIC SPECIALTY SECTIONS						GEN PEDS	HOSP MED DIR	RESEARCH
CARDIOLOGY Chief: A. Javois Assoc Chief: P. Varga Admin: M. Martinez Faculty/Staff/Students	CRITICAL CARE Interim Chief: J. Wang Admin: E. Vazquez Faculty/Staff/Students	ENDOCRINOLOGY Interim Chief: R. Aguirre Admin: E. Vazquez Faculty/Staff/Students	GASTROENTEROLOGY Chief: J. Berman Admin: X. Garcia Faculty/Staff/Students	GENETICS Chief: P. Giampietro Admin: A. Jones Faculty/Staff/Students <u>SUB SECTION</u> METABOLIC GENETICS Chief: A. Tsai	HEM/ONC Interim Chief: L. Hsu Admin Z. Edwards Faculty/Staff/Students SICKLE CELL CENTER Director: L. Hsu	GEN PEDS Chief: J. Hupert Admin: J. Okonma <u>SUB SECTIONS</u> ADOLESCENT MED Chief: F. Wellington DVLP BEHAV HLTH Chief: R. Shah RHEUMATOLOGY Chief: N. Stolberg Faculty/Staff/Students	PICU J. Wang NICU A. Asad NEURO NICU A. Asad SCN A. Pham MBU S. Laurent MED/SURG P. Tsou NICU Hospital Medical Group S. Murphy	DEVELOPMENTAL BIOLOGY AND BASIC SCIENCE Director: S. Reddy Dir Bio Sci Res: J. Ramasamy PRINCIPAL INVESTIGATORS (M. Martin, S. Reddy, X. Tan, J. Ramaswamy, B. Van Voorhees, D. Pillers, J. Romano-Keeler, R. Shah, M. Fitzgibbon) RESEARCH PROGRAMS Children's Environmental Health Initiative Center for Translational Pediatric Research and Education UIC Child Health Research Consortium
INFECTIOUS DIS Interim Chief: A. Kreppel Assoc Chief: S. Carr Admin: A. Tan Faculty/Staff/Students	NEONATOLOGY Chief: D. Pillers Admin: J. Greenia Faculty/Staff/Student	NEPHROLOGY Chief: K. Czech Admin: X. Garcia Faculty/Staff/Students	NEUROLOGY Interim Chief: N. Mata-Machado Admin: A. Tan Faculty/Staff/Students	POP HLTH/CHECK Medical Dir: V. Govind Executive Dir: M. Gerges Faculty/Staff/Students	PUL, ALLERGY & SLP Chief: H. Kumar Assoc Chief: M. Mannaa Admin: E. Vazquez Faculty/Staff/Students			

DEPARTMENT HEADCOUNT BY EMPLOYEE GROUP; TOTAL 324																			
Faculty	125	Academic	39	Civil Service	36	Residents/Fellows	50	Hourly	21	Post Doc	2	Non-Salaried Faculty	34	Students	6	Retiree	7	Extra Help	5