



Illinois Eye  
AND EAR INFIRMARY

2025



ILLINOIS  
**EYE**  
REVIEW

*March 1 - 7, 2025*



Illinois Eye  
AND EAR INFIRMARY



UNIVERSITY OF ILLINOIS  
COLLEGE OF MEDICINE

# From the Program Directors...

*We are pleased to announce the 18th Annual Illinois Eye Review on March 1-7, 2025. To date, over 1900 residents, fellows and practicing ophthalmologists have attended the program, which offers comprehensive coverage of ophthalmology facts, case presentations, and in depth discussions of advanced concepts. Evaluations of the program have been enthusiastic.*

*The Illinois Eye Review activity is an intensive program aimed at residents, fellows and practicing physicians. It covers the clinical essentials of each subspecialty in ophthalmology. The Illinois Eye Review offers a new approach to ophthalmology review and continuing education. The course is organized into six days of factual review and one day of concepts in ophthalmology. From Saturday, March 1 through Thursday, March 6, participants will be introduced to the fundamentals of ophthalmology and will be provided opportunities to review and conceptualize them through case discussions. The last day of the course, Friday March 7, offers a variety of lectures on different concepts in ophthalmology from world renowned faculty. Our approach allows course participants to review facts, test and expand their knowledge through conceptualization, and build on their understanding.*

*The Illinois Eye Review offers participants the opportunity to immerse themselves in the basics of ophthalmology under the tutelage of Illinois Eye and Ear Infirmary physicians, known worldwide for their management of difficult and complicated cases in all major ophthalmologic subspecialties. Equally important, the program offers the opportunity to discuss cases and learn about important new developments and current concepts from experts known for their outstanding ability to teach. As you review the list of the Comprehensive Factual Review Faculty and the Concepts Faculty you will recognize the names of numerous leaders in ophthalmology.*

*We launched the Illinois Eye Review in celebration of the 150th Anniversary of the Illinois Eye and Ear Infirmary, as the best way to honor and also build upon an outstanding tradition of excellence and innovation. Since the beginning, the course has been well-attended and has been successful in offering a learning opportunity unlike any other in ophthalmology. Please join us in Chicago for the 18th Annual Illinois Eye Review, March 1-7, 2025.*

## Course Director



**Nathalie Azar, MD**  
**Professor of Clinical Ophthalmology**  
**Director, Pediatric Ophthalmology & Adult Strabismus Service**  
**Director, Illinois Eye Review**

## Co-Course Director



**Mehmet Cem Mocan, MD, MPH**  
**Associate Professor of Ophthalmology**  
**Co-Director, Illinois Eye Review**

**Illinois Eye and Ear Infirmary**  
**Department of Ophthalmology & Visual Sciences**  
**University of Illinois College of Medicine**  
**University of Illinois Chicago**

	1-Mar	2-Mar	3-Mar	4-Mar	5-Mar	6-Mar	7-Mar	
	Saturday	Sunday	Monday	Tuesday	Wednesday	Thursday	Friday	
	BASICS		CLINICAL				APPLICATIONS	
7.00	OPTICS I (Guyton/ Irsch) 7:00-9:15am	OPHTHALMIC GENETICS (Mauensee) 7:00-8:15am	PEDS Factual I 7:00-9:15am	CORNEA Factual I 7:00-9:00am	UVEITIS Factual I 7.00-8:30am	NEURO-OPH Factual I 7.00-9.15am	ANGIOGENESIS & GENE THERAPY Concepts & Clinical Applications (Kazlauskas) 7-8am	
7.15		Coffee Break					CORNEA Concepts in Keratoconus (Graue) 8:00-9:45am	
7.30		OCULAR EMBRYOLOGY & ANATOMY (Schubert) 8:30-11:30am			Coffee Break			Coffee Break
7.45								
8.00							Coffee Break	
8.15	Coffee Break							
8.30		Coffee Break						
8.45			Coffee Break					
9.00				Coffee Break				
9.15	Coffee Break							
9.30		Coffee Break						
9.45			Coffee Break					
10.00				Coffee Break				
10.15	Coffee Break							
10.30		Coffee Break						
10.45			Coffee Break					
11.00				Coffee Break				
11.15	Coffee Break							
11.30		Coffee Break						
11.45			Coffee Break					
12.00				Coffee Break				
12.15	Coffee Break							
12.30		Coffee Break						
12.45			Coffee Break					
1.00				Coffee Break				
1.15	Coffee Break							
1.30		Coffee Break						
1.45			Coffee Break					
2.00				Coffee Break				
2.15	Coffee Break							
2.30		Coffee Break						
2.45			Coffee Break					
3.00				Coffee Break				
3.15	Coffee Break							
3.30		Coffee Break						
3.45			Coffee Break					
4.00				Coffee Break				
4.15	Coffee Break							
4.30		Coffee Break						
4.45			Coffee Break					
5.00				Coffee Break				
5.15	Coffee Break							
5.30		Coffee Break						
5.45			Coffee Break					
6.00				Coffee Break				
6.15	Coffee Break							
6.30		Coffee Break						
6.45			Coffee Break					
7.00				Coffee Break				
7.15	Coffee Break							
7.30		Coffee Break						

CASE DISCUSSIONS AND  
REVIEW

CLINICAL APPLICATIONS/  
CONCEPTS





**NORMA ALLEMANN, MD, PHD** / UNIFESP Professor and Head of the Discipline of Ophthalmology

Dr. Norma Allemann is Professor and Head of the Discipline of Ophthalmology at UNIFESP, Brazil and former visiting professor in the Department of Ophthalmology at UIC. She obtained her MD degree from Universidade Federal de Sao Paulo (UNIFESP) and both a Masters and PhD degree from the same institution, and a research fellowship at New York Hospital. Her expertise on ultrasonography, doppler, ultrasound biomicroscopy, anterior segment optical coherence tomography, biometry and imaging in ophthalmology has resulted in over 150 scientific articles, 1 book and 41 book chapters. She is currently the president of the Brazilian Society of Ecography in Ophthalmology and is part of the board of SIDUO - Societas Internationalis Pro Diagnostica Ultrasonica in Ophthalmologia. Her area of interest includes propedeutic and imaging methods in ophthalmology for anatomic evaluation of ocular structures in different clinical and surgical situations.



**DIMITRI AZAR, MD, MBA** / University of Illinois College of Medicine Distinguished Professor and BA Field Chair of Ophthalmic Research

Dimitri Azar, MD, MBA is the Chief Executive Officer of Twenty/Twenty Therapeutics, a joint venture established by Google/Verily and Santen. He is Distinguished Professor and BA Field chair of ophthalmic research and Executive Dean Emeritus at the University of Illinois College of Medicine, where he pioneered the convergence of engineering and data science/artificial intelligence with basic and clinical medicine. Dimitri sits on the boards of the Tear Film and Ocular Surface Society, the Himalayan Cataract Project, JelliSee, Priveterra and the Verily SAB board. He also served as a non-executive director on the Boards of Novartis (2012-2019) and Verb Surgical (2015-2019). Dr. Azar is the author of more than 500 scientific articles and book chapters. He is the editor of 23 books in ophthalmology and holds more than 45 patents in ophthalmic pharmacology and bioengineering.



**WALLACE CHAMON, MD** / UNIFESP Professor of Ophthalmology

Dr. Chamon is a Professor of Ophthalmology at UNIFESP, Brazil, and is an internationally recognized leader in the field of refractive surgery. He obtained his MD degree from Faculdade de Medicina de Riber o Preto as well as a Master, PhD, and Free-professorship degree in Medicine from Universidade Federal de Sao Paulo (UNIFESP). He has published 3 books and over 50 book chapters as well as over 100 peer-reviewed scientific articles. He is a past president of the Brazilian Laser Ophthalmological Society. In 2007, he received an achievement award from the AAO. He had been the Chief Editor of Arquivos Brasileiros de Oftalmologia, a PubMed-indexed Ophthalmology Journal, and Associated Editor of The Journal of Refractive Surgery.



**ROBERT FOLBERG, MD** / Oakland University William Beaumont School of Medicine Professor of Ophthalmology and Pathology

Dr. Folberg is Vice President of Education in the EyeCare Partners Innovation Center and Professor of Ophthalmology and Pathology at the Oakland University William Beaumont School of Medicine (OUWB). Dr. Folberg received his MD from Temple University College of Medicine and is Board Certified in Ophthalmology and Anatomic Pathology. In addition to his practice of ophthalmic pathology and a 20-year-long career as an NIH-funded clinician-scientist, he specializes in innovation in medical education. He was the Founding Dean at OUWB and was recently appointed as a Founding Member of the Academy of Distinguished Pathology Educators. He has taught eye pathology throughout the United States and abroad.



**JASMINE H. FRANCIS, MD** / Memorial Sloan-Kettering Cancer Center Associate Attending

Dr. Francis is an Associate Attending of the Ophthalmic Oncology Service at Memorial Sloan Kettering Cancer Center. She received her medical degree from New York University School of Medicine and completed an ophthalmology residency at New York Eye and Ear Infirmary. She is an accomplished clinician-scientist having published almost 200 peer-reviewed papers and book chapters. Her areas of research interests include retinoblastoma and other intraocular tumors, including uveal melanoma, and she routinely presents at national and international meetings.



**ENRIQUE O. GRAUE-HERN ANDEZ MD, MSc** / Instituto de Oftalmolog a Fundaci n Conde de Valenciana Director, Cornea & Refractive Surgery

Dr. Graue-Hern andez is the Director of Cornea & Refractive Surgery at the Instituto de Oftalmolog a Fundaci n Conde de Valenciana (UNAM, Mexico) and an Assistant Professor in Cornea, Refractive Surgery, and External Disease at Universidad Nacional Aut noma de Mexico (UNAM). Dr. Graue-Hern andez received his medical degree from UNAM and his ophthalmology training at the Instituto de Oftalmolog a Fundaci n Conde de Valenciana, where he also completed fellowship training in Anterior Segment Surgery. He completed a post-doctoral research fellowship in Cornea and External Disease at UC-Davis and a Cornea Fellowship at the Royal Victorian Eye & Ear Hospital in Melbourne, Australia. He also holds an MSc Degree from UNAM. He currently serves as the Medical Director of the Red-Cross Eye Bank, Mexico City, and he is an active member of both national and international ophthalmological societies.



**DAVID GUYTON, MD** / Wilmer Eye Institute at Johns Hopkins The Zanzvl Krieger Professor of Pediatric Ophthalmology and Adult Strabismus

Graduating from Harvard Medical School in 1969, Dr. Guyton subsequently completed his residency and chief residency in ophthalmology at the Wilmer Eye Institute at Johns Hopkins in 1977. He received the prestigious Mildred Weisenfeld Award from ARVO in May 2007, as well as the Alcon Research Institute Award, an RPB Senior Scientific Investigator Award, and the RPB Disney Award for Amblyopia Research. He has over 300 publications and 19 U.S. patents. He has served as the President of both AAPOS and ARVO.


**KRISTINA IRSCH, PHD** / Wilmer Eye Institute at Johns Hopkins Assistant Professor of Ophthalmology

Dr. Irsch is an Assistant Professor of Ophthalmology at the Krieger Children's Eye Center at the Wilmer Ophthalmological Institute at The Johns Hopkins University School of Medicine. Following completion of her PhD in Physics from the University of Heidelberg in Germany, she completed a post-doctoral research fellowship at Johns Hopkins, before joining the faculty in 2010. Her research interest has focused on ophthalmic instrument development, including development of a pediatric vision screening device to detect lazy eye (which causes decreased vision) in children at a very early and still easily curable stage, as well as on disorders of ocular motility. Dr. Irsch has won several awards throughout her training, including the Young Investigator Award from the Knights Templar Eye Foundation, as well as NASA Tech Briefs magazine's "Create the Future" Design Contest Medical Innovation Award.


**SADEER B. HANNUSH, MD** / Sidney Kimmel Medical College, Thomas Jefferson University Professor of Ophthalmology

Dr. Hannush is an Attending Surgeon on the Cornea Service at Wills Eye Hospital and Professor of Ophthalmology at Sidney Kimmel Medical College of Thomas Jefferson University in Philadelphia, Pennsylvania. He earned his Doctor of Medicine from Wayne State University and completed his ophthalmology residency at George Washington University. He then went on to fellowship training in Cornea, External Disease and Refractive Surgery at Emory University. Dr. Hannush's areas of interest are full and partial thickness corneal transplantation (endothelial and deep anterior lamellar keratoplasty), permanent keratoprosthesis surgery (artificial cornea), complex cataract and anterior segment reconstructive procedures, and laser vision correction. Dr. Hannush is the Medical Director of the Lions Eye Bank of Delaware Valley and an Advisory Board Member of the Eye Bank Association of America. Dr. Hannush is a Life Fellow of the American Academy of Ophthalmology and was honored with their Life Achievement Award in 2019 for his academic accomplishments.


**KENNETH R. KENYON, MD** / Tufts University School of Medicine Clinical Professor of Ophthalmology

Dr. Kenyon is Clinical Professor of Ophthalmology, Tufts University School of Medicine. After graduation from the Johns Hopkins University School of Medicine, he completed ophthalmology residency and chief residency at the Wilmer Eye Institute, followed by Cornea Fellowship at Mass Eye & Ear Infirmary (MEEI). Joining the Harvard faculty as Director of the MEEI Cornea Service, Dr. Kenyon is especially proud of his leadership in cornea fellow training, including Prof Dimitri Azar! He is known for contributions to ocular surface stem cell transplantation, anterior segment reconstructive surgery and non-infectious cornea ulceration. As an active cornea, cataract and refractive surgeon, Kenyon continues to lecture widely and has numerous publications, including a text on ocular trauma. He has received the Senior Honor Award of the American Academy of Ophthalmology.


**ANDREW G. LEE, MD** / Blanton Eye Institute at Houston Methodist Hospital Herb and Jean Lyman Centennial Chair in Ophthalmology

Andrew G. Lee, MD is the Herb and Jean Lyman Centennial Chair in Ophthalmology and is the Founding Chairman of the Blanton Eye Institute, Department of Ophthalmology at Houston Methodist Hospital in Houston, Texas. He is Professor of Ophthalmology, Neurology, and Neurosurgery at Weill Cornell Medicine and holds adjunct and clinical professorships at several other institutions. Dr. Lee is a graduate of the UVA School of Medicine, completed his ophthalmology residency at Baylor College of Medicine (chief resident), and was a clinical neuro-ophthalmology fellow and Fight for Sight postdoctoral research fellow at the Wilmer Eye Institute, the Johns Hopkins Hospital. Dr. Lee has served in numerous leadership roles at the American Academy of Ophthalmology and the North American Neuro-ophthalmology Society, and he has been the invited speaker at over 400 national and international meetings.


**IRENE H. MAUMENEE, MD** / Columbia University Medical Center Professor of Ophthalmology

Dr. Irene H. Maumenee is Professor of Ophthalmology at CUMC and Director of Ophthalmic Genetics. After receiving her medical degree from the University of Goettingen, she joined the Department of Ophthalmology at the University of Geneva, where she wrote a thesis on X-linked retinitis pigmentosa. She then moved to the University of Honolulu where she initiated the long term analysis of achromatopsia, resulting in identification of the first gene for colorblindness, CNGB3. In 1969, she joined the Department of Medical Genetics at Johns Hopkins University. Dr. Maumenee is a world-renowned genetic ophthalmologist and has devoted her life work to understanding and teaching of genetic eye diseases. By merging clinical genetics with laboratory investigations, her efforts have been formative for ophthalmic genetic translational studies. She has numerous awards, including the AAO's 2017 Laureate Recognition Award.


**CRAIG MCKEOWN, MD** / Bascom Palmer Eye Institute Professor of Clinical Ophthalmology

Dr. Craig McKeown is Professor of Clinical Ophthalmology specializing in Pediatric Ophthalmology and Adult Strabismus. He earned a BS and MD from Northwestern University and completed a residency in ophthalmology at Walter Reed Army Medical Center. He also completed fellowships in Pediatric Ophthalmology and Strabismus at Children's Hospital National Medical Center, George Washington School of Medicine, and in Pediatric Ophthalmology and Ophthalmic Genetics at Wilmer Eye Institute, Johns Hopkins University School of Medicine. Dr. McKeown conducts research on pediatric disorders of the eye and has published widely on this subject. He has been the recipient of numerous academic and military awards/honors.


**NANCY NEWMAN, MD** / Emory University Leo Delle Jolley Chair of Ophthalmology, Director of Neuro-Ophthalmology

Dr. Nancy J. Newman holds the LeoDelle Jolley Chair of Ophthalmology, and is Professor of Ophthalmology and Neurology and Instructor in Neurological Surgery at the Emory University School of Medicine, where she serves as the Director of Neuro-Ophthalmology. She attended Princeton University, the University of London on a Marshall Scholarship, and Harvard Medical School. She trained in Internal Medicine and Neurology at the Massachusetts General Hospital, and in Neuro-Ophthalmology at the Massachusetts Eye and Ear Infirmary. She is a Fellow of the American Academy of Neurology, the American Neurological Association, and the North American Neuro-Ophthalmology Society. She has over 600 scientific publications, and has lectured widely throughout the world and is known for her innovative teaching style.

## Guest **SPEAKERS**



**ANDREW RONG, MD** / **Bascom Palmer Eye Institute** Assistant Professor and Medical Director-Ophthalmic Plastic, Reconstructive & Orbital Service

Dr. Andrew Rong is an Assistant Professor of Ophthalmology and Medical Director of the Ophthalmic Plastic, Reconstructive and Orbital Service at the Bascom Palmer Eye Institute. He completed both his residency and fellowship at the Bascom Palmer Eye Institute and joined the faculty with a dual appointment at the Sylvester Comprehensive Cancer Center. He is known for his translational work in ocular oncology through the Al-Rashid Orbital Vision Research Laboratory, where has published numerous papers on sebaceous carcinoma and ocular surface reconstruction.



**HERMANN D. SCHUBERT, MD** / **Columbia University** Professor of Clinical Ophthalmology, Pathology and Cell Biology

Dr. Hermann D. Schubert is a Professor of Clinical Ophthalmology, Pathology and Cell Biology at Columbia University. He received his MD from Heinrich Heine University in Duesseldorf Germany and completed residencies in both pathology and ophthalmology at Columbia Presbyterian Hospital in the City of New York. He trained in clinical retina at Wills Eye Hospital and developed at surgical retinal practice at The Harkness Eye Institute. He has taught in the Basic Science Course at The Harkness Eye Institute since 1981, the Wills Eye Review since 1991, the Lancaster Course since 2000. He has been a director, president and chair of this and that but his passion has been retinal surgery, enhanced by anatomy, pathology, physiology and an understanding of ocular development.



**JAMES C. TSAI, MD, MBA** / **Icahn School of Medicine at Mount Sinai** Delafield-Rodgers Professor & Chair, President of NYEE of Mount Sinai

Dr. James Tsai, a clinician-scholar and health care administrator, is an expert in the diagnosis and management of challenging glaucoma cases including complex glaucoma surgery. President of New York Eye and Ear Infirmary of Mount Sinai (NYEE), the first and longest operating specialty hospital in the Western Hemisphere, Tsai is also the inaugural Delafield-Rodgers Professor of Ophthalmology and Health System Chair of the Department of Ophthalmology at the Icahn School of Medicine at Mount Sinai (ISMMS) and Mount Sinai Health System (MSHS). Prior to joining Mount Sinai, Tsai served as the inaugural Robert R. Young Professor and Chair of the Department of Ophthalmology and Visual Science at Yale University School of Medicine and Chief of Ophthalmology at Yale-New Haven Hospital. Dr. Tsai is the recipient of numerous awards including a Visionary Award from Fight for Sight and a Lifetime Achievement Honor Award from the AAO.



**KENNETH WRIGHT, MD** / **University of Southern California** Director of Pediatric Ophthalmology Research and Education

Dr. Kenneth Wright is Director of Wright Foundation for Pediatric Ophthalmology & Strabismus, Los Angeles and Clinical Professor of Ophthalmology at the USC Keck School of Medicine. He spent three years as Director of Pediatric Ophthalmology at the Cleveland Clinic. Prior to the Cleveland Clinic, he was a full-time faculty member at USC School of Medicine and Children's Hospital of Los Angeles. Dr. Wright is devoted to the welfare of children and the health of their eyes. He is an internationally respected ophthalmologist and educator. He has authored over 100 scientific papers and 7 textbooks on ophthalmology and eye surgery including the third edition of the renowned thousand page textbook, Pediatric Ophthalmology and Strabismus.



**LUCY H. YOUNG, MD, PHD** / **Harvard Medical College** Associate Professor of Ophthalmology

Dr. Lucy H. Young is Associate Professor of Ophthalmology at the Massachusetts Eye and Ear Infirmary, Harvard Medical School. She received her MD degree from the University of Wisconsin-Madison and her PhD degree in Biology from Harvard University prior to her Ophthalmology residency and Vitreoretinal fellowship at the Massachusetts Eye and Ear Infirmary, Harvard Medical School. Her clinical interests include diabetic retinopathy, age-related macular degeneration, trauma-related retinal complications, and retinal infections. She is the director of The Lancaster Course in Ophthalmology and has been on its faculty since 1990. Her publication list includes over 100 peer review papers, book chapters and a book on Endophthalmitis.

**COURSE DIRECTOR** **Nathalie Azar, MD** **CO-COURSE DIRECTOR** **Mehmet Cem Mocan, MD, MPH**

**PURPOSE** The purpose of the Illinois Eye Review is concomitantly to provide participants with the fundamentals of ophthalmology research and practice; provide intensive sessions that explicate cutting edge treatments and advances within the field; and offer a variety of topical lectures by eminent ophthalmologists that will provide an opportunity for participants to apply what they have learned to real-world clinical problems.

**COURSE OBJECTIVES** By the end of the course participants should be able to:

- Describe basic tenets of the fundamentals of clinical ophthalmology covering all subspecialties.
- Demonstrate by review and conceptualization through case discussions, the epidemiology, clinical presentation, and management of ophthalmological diseases.
- Distinguish, interpret and improve their expertise on the pathophysiology of ophthalmic diseases.

**INTENDED AUDIENCE** This course has been organized for ophthalmologists, general physicians, and optometrists encompassing all levels of experience and knowledge.

**ACCREDITATION** The University of Illinois at Chicago (UIC) College of Medicine is accredited by the Accreditation Council for Continuing Medical Education to provide continuing medical education for physicians.

**QUESTIONS?** **CONTACT:** Jenny Baker **EMAIL:** [jbaker9@uic.edu](mailto:jbaker9@uic.edu) **HTTPS://**[GO.UIC.EDU/IER](https://go.uic.edu/IER)



## Comprehensive Ophthalmology



Soledad Cortina, MD<sup>^</sup>



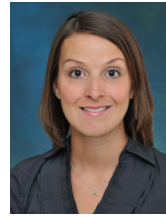
Taylor Starnes, MD,  
PhD



Charlotte Joslin, OD,  
PhD



Angelica Scanzera,  
OD, MPH<sup>\*</sup>



Ellen Shorter, OD



Hannah Yoon, OD, MS<sup>\*</sup>

## Contact Lens

## Cornea & Refractive Surgery



Elmer Tu, MD



Ali Djalilian, MD



Dimitri Azar, MD, MBA



Jose de la Cruz, MD<sup>^</sup>



Sandeep Jain, MD



Mark Rosenblatt, MD,  
PhD, MBA, MHA



Hajirah N. Saeed, MD,  
MPH<sup>°</sup>

## Glaucoma



Thasarat Vajaranant,  
MD, MHA



Pathik Amin, OD



Ahmad Aref, MD, MBA



David Hillman, MD



Joan Stelmack, OD,  
MPH



Peter MacIntosh, MD<sup>°</sup>

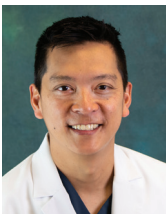


Anil Gulati, MD

## Low Vision

## Neuro-Ophthalmology

## Oculoplastics



Pete Setabutr, MD<sup>^</sup>



Van Ann Tran, MD



Nathalie Azar, MD



Daniel Maidana, MD,  
PhD



Cem Mocan, MD, MPH



Kimberlee Curnyn, MD



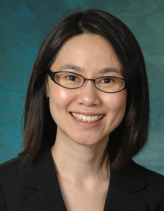
Lawrence Kaufman,  
MD, PhD



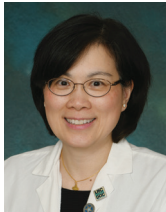
Benjamin Mathew, MD

## Pediatric Ophthalmology & Adult Strabismus

## Pathology



Amy Lin, MD



Jennifer Lim, MD



R.V. Paul Chan, MD,  
MSc, MBA<sup>°</sup>



Felix Chau, MD<sup>°</sup>



Justine Cheng, MD<sup>°°</sup>



Robert Garoon, MD



Michael Heiferman, MD



Robert Hyde, MD, PhD

## Retina

## Retina, Continued



William Mieler, MD



Lawrence Ulanski, MD



Pooja Bhat, MD<sup>\*</sup>



Ann-Marie Lobo,  
MD, MS



Charles Kinnaid, OD



Vandana Badlani, MD



Mei Zhou, MD



Azizur Rahman, MD

## Uveitis

## Miles Square

## Affiliated

<sup>^</sup> Also member of the Cornea Service. <sup>^</sup> Also Co-Director, Millennium Park Eye Center. <sup>\*</sup> Also members of Comprehensive Ophthalmology.

<sup>°</sup> Also members of Pediatric Ophthalmology. <sup>°°</sup> Also member of the Uveitis Service.